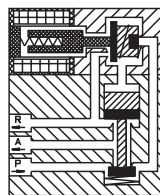


Type MR 800

3-way manifold valves, pilot operated, with parallel control unit

Application
compressed air
and neutral gases



Type/ Order No.	Orifice [mm]	Port size	Pressure [bar]	kv-value [m³/h]	Weight [kg]	Manual override
MR 800-001	4,0	Tube O.D. 6	1,5 - 8,0	0,39	1,5	with
MR 800-002	4,0	Tube O.D. 6	1,5 - 8,0	0,39	1,5	without

Sealing material: **P** (NBR)

Inner parts: Stainless steel
Max. ambient temp.: 50 °C
Operating voltage: DC: 24 V, 12 V
Voltage tolerance: -15%... +10%

Body material: Aluminum (anodized)
Mounting direction: free
Power consumption: 1 W each valve
Duty cycle: 100 %
Degree of Protection (EN 60529): IP 54 (IP 64)
Electrical connection: see page 430

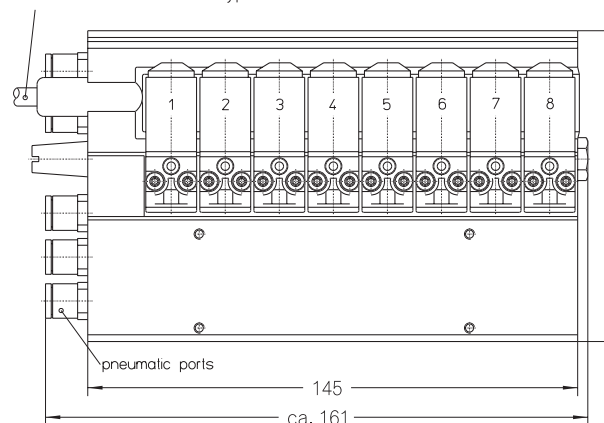
400

Other configurations upon request

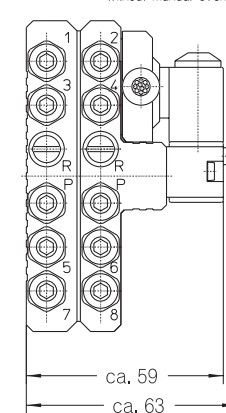
The right to modification is reserved

staiger

see electrical connector for type MR



MR 800-001
with manual override
MR 800-002
without manual override



Mounting types and accessories see page 432



Dimensions in mm

401